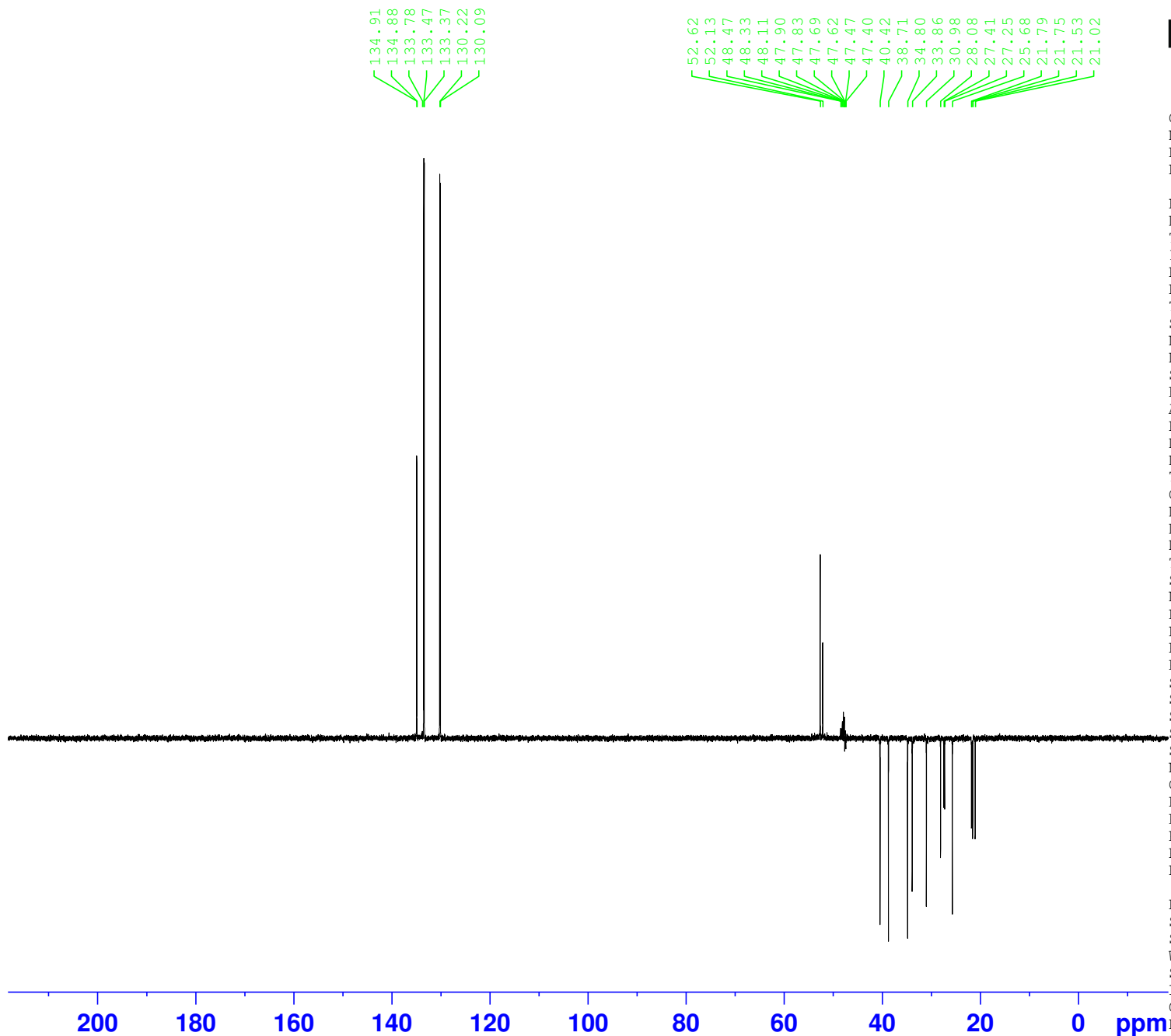


SC-15-80P



Current Data Parameters  
NAME c  
EXPNO 12  
PROCNO 1

F2 - Acquisition Parameters  
Date\_ 20240416  
Time 0.28 h  
INSTRUM spect  
PROBHD Z116098\_0527 (  
PULPROG deptsp135.b  
TD 119044  
SOLVENT MeOD  
NS 1500  
DS 4  
SWH 23809.523 Hz  
FIDRES 0.400012 Hz  
AQ 2.4999239 sec  
RG 212.93  
DW 21.000 usec  
DE 8.69 usec  
TE 298.2 K  
CNST2 145.0000000  
D1 1.00000000 sec  
D2 0.00344828 sec  
D12 0.00002000 sec  
TD0 1  
SFO1 100.6479756 MHz  
NUC1 13C  
P1 9.78 usec  
P13 2000.00 usec  
PLW0 0 W  
PLW1 80.98200226 W  
SPNAM[5] Crp60comp.4  
SPOAL5 0.500  
SPOFFS5 0 Hz  
SPW5 11.83500004 W  
SFO2 400.2316009 MHz  
NUC2 1H  
CPDPRG[2] waltz64  
P3 9.72 usec  
P4 19.44 usec  
PCPD2 90.00 usec  
PLW2 16.02700043 W  
PLW12 0.18694000 W

F2 - Processing parameters  
SI 131072  
SF 100.6379135 MHz  
WDW EM  
SSB 0  
LB 1.00 Hz  
GB 0  
PC 1.40